

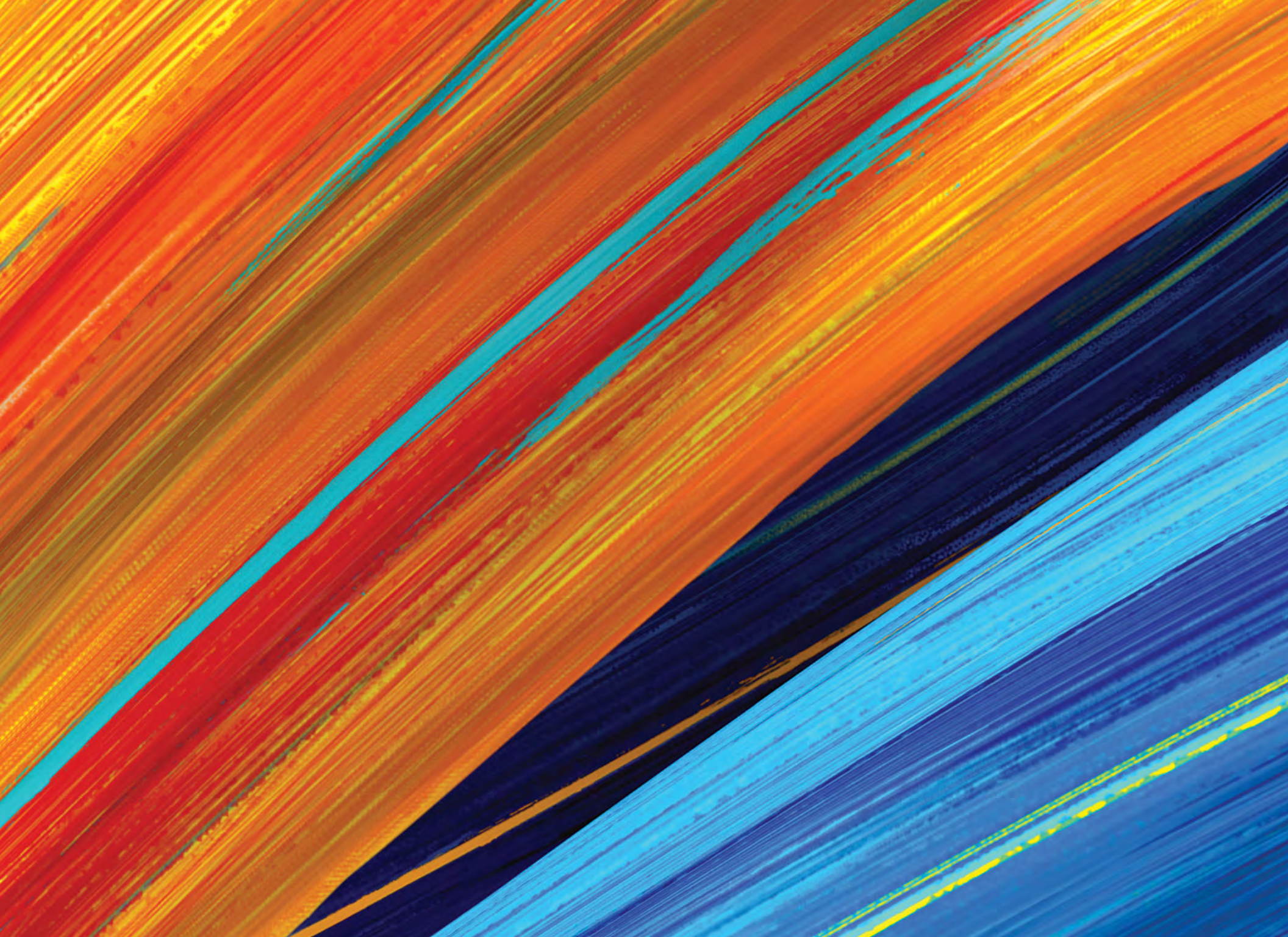
An abstract graphic on the left side of the page consists of several thick, overlapping brushstrokes in vibrant colors: red, orange, yellow, and blue. The strokes are dynamic and expressive, creating a sense of movement and energy. They are set against a solid, bright yellow background.

UCI Graduate Division

THE CASE FOR SUPPORT

BRILLIANT FUTURE

THE CAMPAIGN FOR **UCI**



The background of the slide is an abstract composition of numerous thin, parallel lines or streaks. These streaks are primarily in shades of blue and purple, with some vibrant orange and yellow streaks interspersed, particularly towards the top and bottom edges. The lines are oriented diagonally, creating a sense of movement and energy. A dark blue rectangular box is positioned in the center-right of the slide, containing the main text.

***Today's graduate students
and postdoctoral scholars
are the future leaders of
California and of the world.***



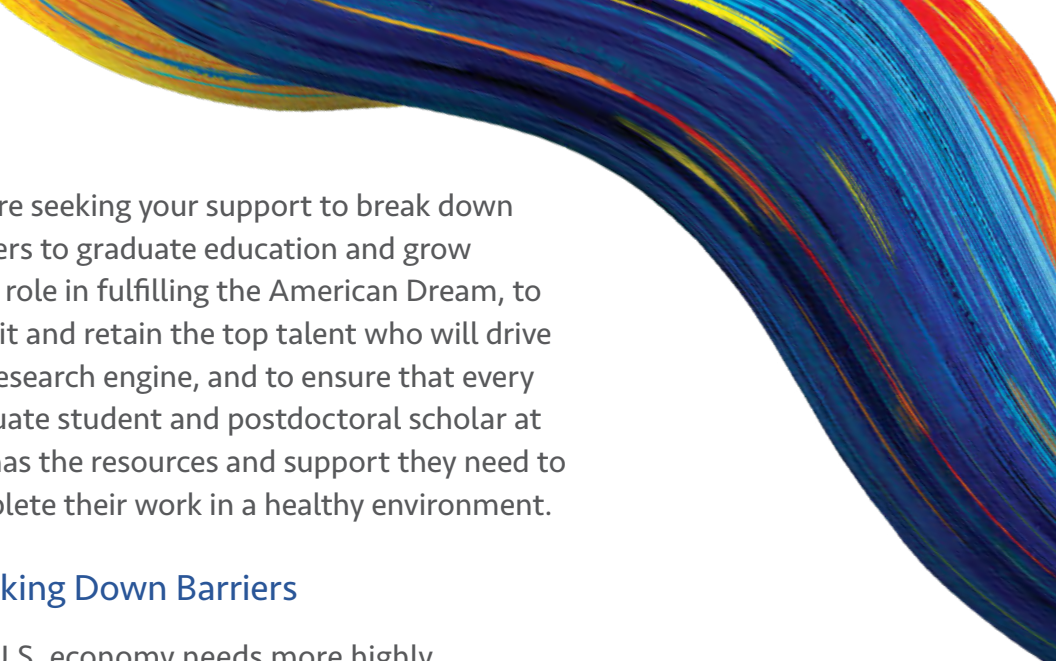
Training the Next Generation Brilliant Future, UCI Graduate Division

Scholar. Teacher. Student.

Graduate students are the heart and soul of a research university. They are the next generation of global leaders. It is time to invest in their brilliant future.

Today's graduate students and postdoctoral scholars are the future leaders of California and of the world. They are the next generation of scholars, researchers, doctors, lawyers, politicians, and CEOs. They are the engine that drives the innovative research of every school on campus. They are the teaching assistants putting in long hours teaching, mentoring, and grading. They are the entrepreneurs who will launch the next unicorn startup. They are the brilliant future.

Investing in higher education has never been smarter. Graduate education has quickly become a key element of success in the modern global economy, and graduate students are poised to make major impacts across all levels of society. Few investments deliver the return of supporting the brightest, boldest, most brilliant scholars among us.



Across UCI's many schools and programs, graduate students are working on cutting-edge scientific breakthroughs, award-winning artistic creations, and impactful engaged scholarship. The Graduate Division supports all of these students, driving efforts in excellence, engagement, and inclusion campuswide.

With your help, we will train the next generation of leaders in every field.

Brilliant Future For The Next Generation

Initiatives and Need Breakdown

The UCI Graduate Division's role is to help recruit, support and foster the success of UCI's graduate students and postdoctoral scholars — the talented researchers, innovators, teachers, and entrepreneurs who will shape the future of our world. And with your investment, we are poised to do even more.

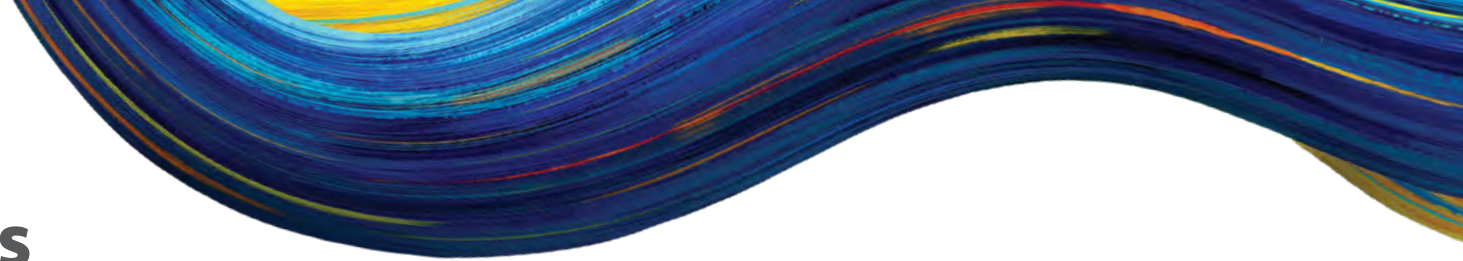
As an inherently multidisciplinary unit, the Graduate Division supports more than 7,000 students across 145 graduate programs. With 29 of those graduate programs ranked in the top 50 in the world, graduate education at UCI is high quality and improving every year.

We are seeking your support to break down barriers to graduate education and grow UCI's role in fulfilling the American Dream, to recruit and retain the top talent who will drive our research engine, and to ensure that every graduate student and postdoctoral scholar at UCI has the resources and support they need to complete their work in a healthy environment.

Breaking Down Barriers

The U.S. economy needs more highly educated graduate students to continue to grow and compete globally. Many top potential candidates choose to stay in the workforce rather than incur the high costs of graduate education. We must recruit these excellent candidates to create and sustain the talent pool necessary to compete in global markets.

The mission of UCI's Graduate Division is to serve as a catalyst for a world-class educational experience and to provide resources and essential services to the next generation of leaders. It costs more than ever to recruit and enroll elite graduate students, particularly traditionally underrepresented candidates.



「diversity drives innovation」

These scholars are critical to the success of the research and teaching mission at the center of the university. They come to us with keen intellect, research skills, entrepreneurial ambitions, and a passion to teach and mentor undergraduate students. Our job is to make certain we break down the barriers to their success and provide them with the professional skills, support and financial resources they need to thrive on campus and beyond.

We are growing. Our multiyear Strategic Plan calls for us to make UCI a first-choice campus for an increasing number of diverse, high-quality graduate and professional students. Financial support that makes graduate education viable for the best and brightest, regardless of economic concerns, is essential to an inclusive and excellent student body. Past successes demonstrate the return on this investment:

- UCI's Nevin Graduate Endowment Fellowship program provides financial supplement to the recruitment packages


offered by our schools to attract students who might otherwise forego graduate work because of costs, or accept offers at a competing university.

- Chancellor's Club Fellowships provide essential funding for students who are immersed in writing their dissertations, relieving them of the need to hold down a job for one academic quarter.
- The Diverse Educational Community and Doctoral Experience (DECADE) strives to increase the recruitment, retention and completion of diverse Ph.D. students. Through DECADE, we advance inclusive excellence and welcome underrepresented doctoral students into the UCI community, and prepare them for leadership positions upon degree completion.

With your support for our graduate students, we'll continue breaking down the barriers to advanced degrees and ensure we train the best and brightest of the next generation.



Support for graduate education can produce the best scientists, humanists, and artists the world has ever known.



***Investing in these
programs means investing
in the economic engine of
the nation.***



「leading the way on health and housing」

The Future of Work

Work is changing. Professional development programs in the Graduate Division ensure that UCI graduate students and postdocs are proficient in new and specialized approaches to teamwork, cross-disciplinary networking, and problem solving.

Professional and executive programs at UCI ensure that leaders are prepared for this new future. Built around the needs of managers and executives, these programs provide a high-quality education and access to powerful professional networks. Innovative approaches ensure that top professionals can earn their degrees at times and places that work for them without sacrificing quality. Investing in these programs means investing in the economic engine of the nation.

The work of science is also changing. Our most pressing research questions require more complex approaches than ever before. The interdisciplinary graduate programs meeting these challenges foster collaboration between faculty and students from a number of fields. The Graduate Division oversees these innovative programs, integrating multiple research teams and serving to coordinate and support graduate students working together from all over campus. These programs currently include Mathematical Computational and Systems Biology, Networked Systems, Computational Science and Transportation Sciences, and Neurosciences, with more programs emerging as interdisciplinary scholarship grows campuswide.

With your support, additional graduate programs can be developed that will ensure the future of work is brilliant.

「diverse teams perform better」

Life Skills, Health, and Wellness

There is no doubt that our graduate students and postdoctoral scholars emerge into the workforce well educated. But industry and academic leaders also particularly appreciate the training UCI's Graduate Division provides in teamwork, presentation skills, mentoring, and leadership, work/life balance, and ethics. Through a series of speakers, programs, and workshops, we teach our students skills that help them succeed beyond their time at UCI.

Graduate school and postdoctoral training are stressful. Students and postdoctoral scholars often need to take out loans in addition to funding from the university. The high cost of housing near campus means that these brilliant scholars are sometimes spending hours commuting every day — hours that could have been spent in the lab, curing cancer, or in the studio, breaking through the next artistic barrier. Nationwide, research indicates that graduate students increasingly show

signs of depression that can lead to other health problems or dropping out of school. UC Irvine is leading the way in the UC, in California, and across the nation by serving the whole person. With your help, we can become the national model for a healthy, successful, post-graduate population.

The Graduate Professional Success Initiative ensures that our graduate students develop the breadth of professional skills they need to forge a strong career path. Current programs cover communications and cultural fluency, teaching techniques, leadership, life skills, and entrepreneurship. Ethics and professional responsibility are also emphasized. Responsible conduct of research requires a clear understanding of ethical reasoning, intellectual property, acknowledgment of the contributions of others, and conflict of interest. With your support, we can expand these programs to include professional coaching, career counseling, and more.







UCI is a leader in supporting first-generation college students. Graduate Division's work will ensure we are also leaders in supporting these students in graduate school and beyond.



「serving the whole graduate student」

Graduate Division Academic Counseling services assist students with their academic and mental well-being. Some studies show that as many as 40 percent of graduate students nationwide show some signs of depression. Counselors are uniquely qualified to help with adapting to a new environment, establishing mentor-mentee relationships, setting boundaries, expanding career paths and juggling multiple roles. With only one counselor, Graduate Division still conducted more than 3,000 counseling sessions over the last three years. With your help, we can expand this staff to serve more people with greater resources, ensuring our students are the healthiest and happiest in the nation.

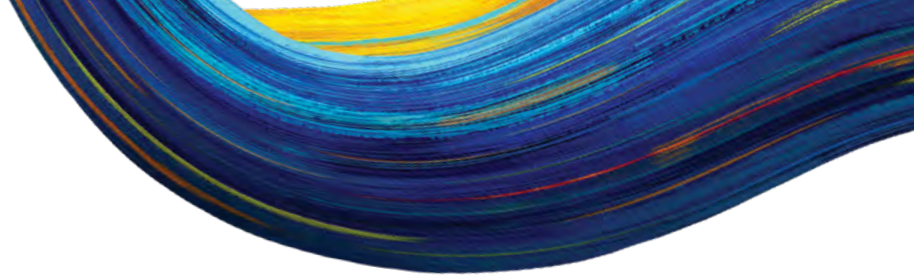
UC Irvine is the statewide leader in graduate student housing, offering a four-year guarantee to every Ph.D. student. Earning a Ph.D., especially as a top scholar headed for the best positions following UCI, takes more than four years. With your help, we can bridge the gap of needed housing through housing support grants or even a new graduate student housing facility. Nationally, graduate students increasingly struggle with housing insecurity due to the rising price of rent. UCI is showing the world there is a better way.



Fostering Our Brilliant Future

The strategic and aggressive recruitment needed to make UCI a competitive, sought-after destination for the most ambitious, talented and diverse graduate students and postdocs requires significant investment. Less than 10 percent of a University of California undergraduate's education is covered by state funds. The rest is funded by tuition, which can leave students in debt upon graduation — a significant obstacle in the graduate education path. At the same time, recent statistics show that career positions requiring at least a master's degree grew by 21.7 percent in the last six years. Competition for elite graduate students requires innovative approaches and the highest quality career opportunities. Recruitment for elite Ph.D. students also requires a stipend of at least \$30,000 each year beyond tuition, housing and other benefits, and supplies. We invite you to partner with us to help all our graduate students make a deep and lasting impact on the future of UCI and beyond by supporting them financially as students in graduate and professional programs.





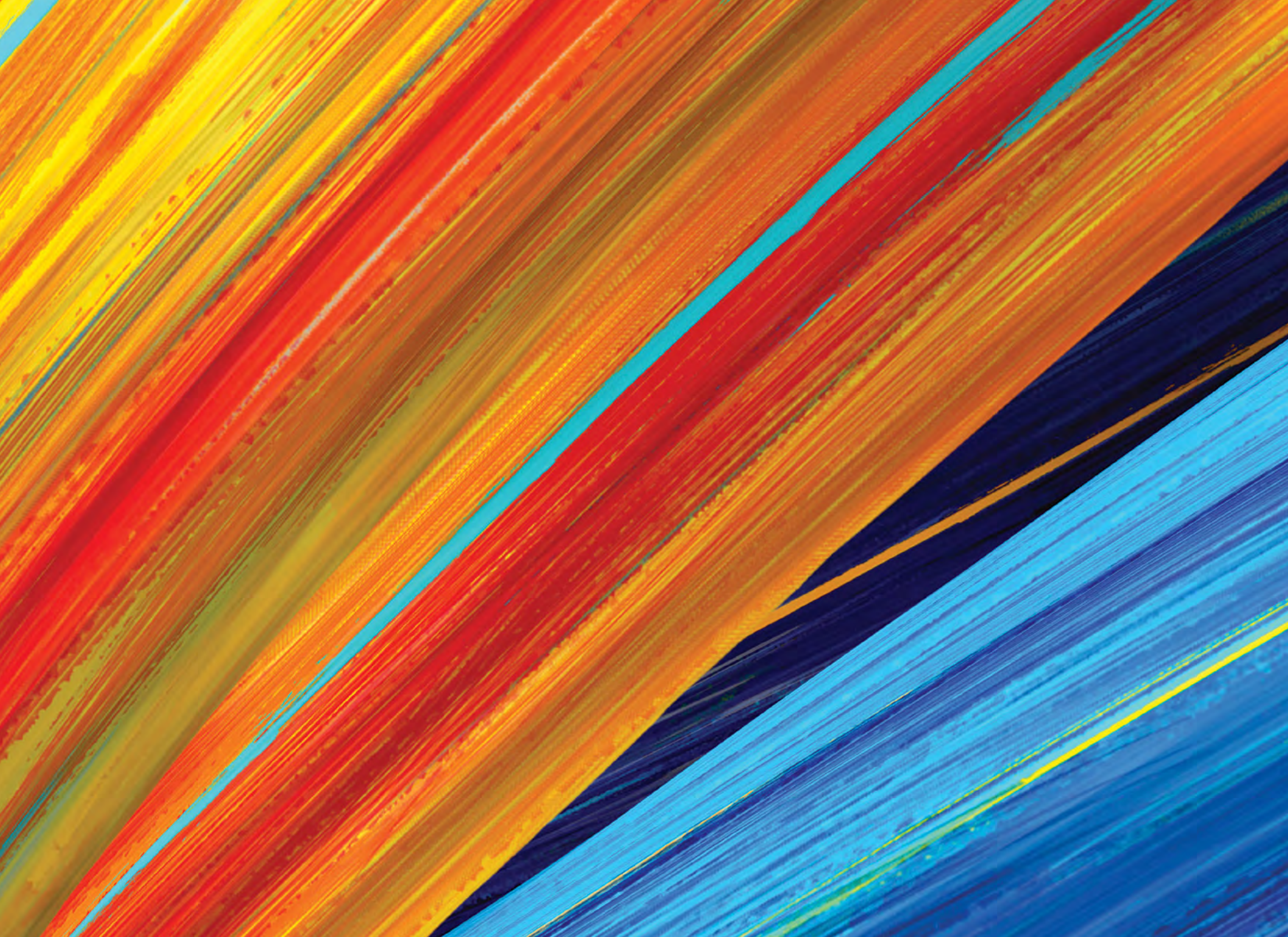
Endowed graduate fellowships for Ph.D. and M.F.A. students and additional support for the whole student are central to recruiting and retaining the best graduate students in the world. Participation opportunities:

- **Graduate Education Development Grants:** to support faculty in developing cutting-edge innovative graduate, professional, and doctoral programs.
- **Recruitment Fellowships:** to recruit the best, brightest, and most diverse graduate students.
- **Dissertation Fellowships:** to free the Ph.D. student from employment during the final and critical phase of dissertation writing. Students who receive these fellowships complete their dissertations in a timely manner, allowing them to move on to impactful careers post-graduation.
- **Interdisciplinary Fellowships:** to support graduate students in three new Ph.D. programs that bring scholars together from several campus units to do cutting-edge research at the intersections of traditional disciplines.

- **Graduate Resource Center support:** to sponsor essential programming and speakers to enhance professional and life-skills development and provide critical services for mental and physical health.
- **Graduate Student Housing:** to ensure that the best, brightest, and most brilliant minds are housed safely and able to focus on the work of research and teaching.

Your philanthropic support will help us continue to bring the best and brightest to UCI, to help them thrive once they are here, and to ensure excellent post-graduate placement and careers for graduate students and postdocs from all backgrounds. Join us in helping UCI train the next generation of scientists, scholars, teachers, and entrepreneurs for a brilliant future.









120 Aldrich Hall • Irvine, CA 92697
grad.uci.edu